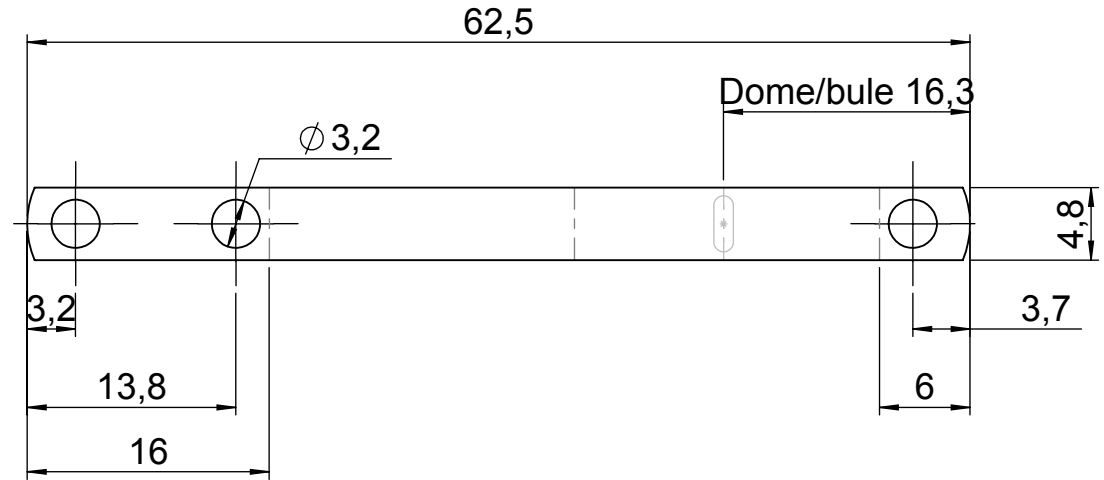


Flat pattern (udfoldet)



**DANOTHERM**

Næsbyvej 20, DK 2610 Rødovre  
Tel: +45 36 732222 - Fax: +45 36 732223  
e-mail: danotherm@danotherm.dk  
www.danotherm.dk

**EKSTRABØJLE 12Ø STANDARD**

**Material: FeNi42**

**Path: T:\sw\pnr\pnrTegn\**

<b>Weight (g)</b>	<b>Date</b>	<b>Creator:</b>	<b>Approved:</b>	<b>Scale</b>
-------------------	-------------	-----------------	------------------	--------------

17.01.2013

HEE

2:1

**Tolerance:**

**File:** P32230

<b>No.:</b>	<b>Last Revision:</b>	<b>Rev Date:</b>	<b>By:</b>	<b>Paper size:</b>
-------------	-----------------------	------------------	------------	--------------------

1 New Drawing

17.01.2013

HEE

A4

Any amendment must be confirmed by DANOTHERM ELECTRIC A/S

**Drawing No.:**

**P32230**

**Sheet:**

1 of 1

